

Custom Engineering

Custom Engineering, Custom Design and Custom Manufacturing leads to Custom Chillers and Custom Fluid to Fluid Heat Exchangers. What makes BV Thermal Systems stand out from the other manufacturers? We have the ability to combine custom engineering, custom designing and custom manufacturing to deliver you a chiller or heat exchanger to meet your exact specifications. No detail is too small or too large. We take the time to understand your process and use that

knowledge to design, engineer and manufacture the unit your process requires.



Low Temperature

The BV Thermal Systems Low Temperature Chillers offer continuous cooling with a temperature from -40° to +30°C. Featuring a low profile design with high quality locking casters, the Low Temperature Chillers are optimized at your load point for maximum efficiency. The Low Temperature Chillers also provide a small footprint with exceptional performance and unmatched reliability that make them the preferred choice.

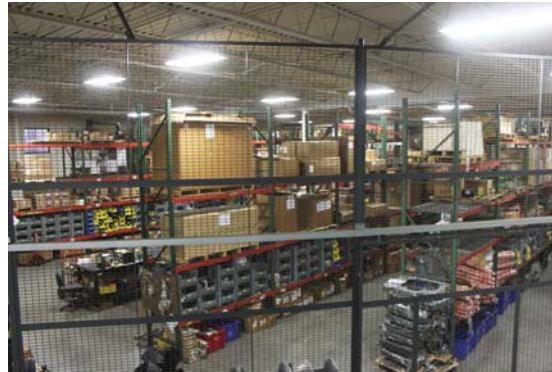


Standard size options - more sizes available

MODEL	MCLT050	MCLT100	MCLT400	MCLT800	MCLT1500
Cooling Capacity	425 watts @ -20°C	1000 watts @ -20°C	1000 watts @ -40°C	2000 watts @ -40°C	8700 watts @ -40°C
Stability	±0.1°C				
Temp. Range	-20°C to +30°C		-40°C to +30°C		
Pump*	2.2 GPM @ 60 PSI		4.2 GPM @ 60 PSI		
Reservoir Volume (gallons)	2				7
Power	115V, 9A	200-230V, 12A	200-230V, 19A	200-230V, 20A	200-230V, 30A

For information, please visit www.BVThermal.com or call 209-522-3701

Parts & Service



The BV Thermal Systems has manufactured and serviced recirculating chillers and fluid heat exchangers for over 30 years. It is not uncommon to find units decades old still performing. However, from time to time, service is still required. Should the situation arise and service is required, we have the experience and knowledge to service your equipment. We strive for excellence and rapid repairs so you are up and running as soon as possible.

BV Thermal Systems has a large inventory of spare parts on hand, ready to ship to you. If for some reason, we don't have it, we will get it for you. Call us at 209-522-3701 for your service and spare parts needs, we will do everything possible to get you up and running quickly.



BV Thermal System Corporate Office

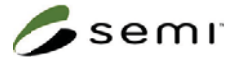


38241 Willoughby Parkway
Willoughby, OH 44094



1064 Woodland Ave
Modesto, CA 95351

www.BVThermal.com • 209-522-3701



ISO 9001:2008 - ANSI/ISO/ASQ Q9001-2008

38241 Willoughby Parkway
Willoughby, OH 44094

1064 Woodland Ave
Modesto, CA 95351

www.BVThermal.com • 209-522-3701



Recirculating Chiller

Manufactured and thoroughly tested in the United States the recirculating chillers feature a hot gas by-pass which allows for greater stability and thermal protection for the pump, motor and compressor. With simplicity in design and operation, the BV Thermal Systems Recirculating Chiller is designed to provide years of reliable liquid temperature control.



With environmentally friendly CFC refrigerant the Recirculating Chillers feature corrosion free wetted surfaces and is RoHS compliant. With the largest selection of options in the industry, the Recirculating Chiller may be designed and manufactured to your exact requirements and specifications.

Standard size options - more sizes available

MODEL	MC025	MC050	MC100	MC200
Cooling Capacity	828 watts @ 20°C	1764 watts @ 20°C	3163 watts @ 20°C	7000 watts @ 20°C
Stability	±0.1°C			
Temperature Range	+5°C to +35°C			
Pump	2.2 GPM to 99 PSI			4.0 GPM to 99 PSI
Reservoir Volume	1.3 gal	1.3 gal	2 gal	7 gal
Power Requirements	115V, 9A	200-230V, 8A	200-230V, 12A	200-230V, 17A
MODEL	MC400	MC600	MC800	MC1500
Cooling Capacity	12,800 watts @ 20°C	20,000 watts @ 20°C	26,000 watts @ 20°C	52,000 watts @ 20°C
Stability	±0.1°C			
Temperature Range	+5°C to +35°C			
Pump	10 GPM to 40 PSI			20 GPM to 40 PSI
Reservoir Volume	7 Gal			
Power Requirements	200-230V, 3, 16A	200-230V-3, 22A	200-230V-3, 26A	460V-3, 28A

Fluid to Fluid Heat Exchanger

The heat exchangers are ideal when in-house water is either too cold, too dirty or does not have enough pressure to adequately support your water cooled equipment. The fluid to fluid heat exchangers provide a clean stable, controlled closed-loop water cooling system. By eliminating the problems associated with direct use of in-house water such as insufficient or fluctuating flow and changing pressure, the fluid to fluid heat exchangers from are the ideal low cost energy saving heat removal process.



The fluid to fluid heat exchangers offer the advantage of removing heat from the circulating coolant (via a water to water heat exchanger) and transfer heat to either tap or facilities water. The actual temperature of the circulating coolant is controlled by a temperature controller and a solenoid valve. Due to varying water supplies, a gate valve is also used to regulate flow/pressure of the facility or house water supply.

The Liquid Heat Exchanger is designed for highly efficient heat transfer by providing closed loop circulation of temperature controlled coolant. Controlled temperature coolant is circulated from an enclosed reservoir by a high reliability pump. The heavy duty design makes it ideal for demanding commercial and industrial applications where high performance and low maintenance are important.

Standard size options - more sizes available

MODEL	MCLT250	MCLT400	MCLT800	MCLT1500
Cooling Capacity	500watts @ -40°C	1000 watts @ -40°C	2000 watts @ -40°C	8700 watts @ -40°C
Stability	±1.2°C			
Temp. Range	-40°C to +30°C			
Pump*	2.2 GOM @60 PSI	4.2 GPM @ 60 PSI		
Reservoir Volume (gallons)	2			7
Power	200-230V, 17A	200-230V, 19A	200-230V, 20A	200-230V, 30A

Rack Mounted Chiller & Heat Exchanger

With environmentally friendly CFC refrigerant our Rack-Mounted Chiller features easy to use time tested components such as an adjustable temperature high & low alarm and a 100 million cycle solenoid valve. With the largest selection of options in the industry, the Rack-Mounted Chiller may be designed and engineered to your exact requirements and specifications and is manufactured to provide years of reliable service.



The BV Thermal Systems Rack Mount Fluid to Fluid Heat Exchanger is compatible with standard 19 inch rack mount systems. These units offer continuous cooling with a temperature range from +5° to +50°C and cooling capacity to 75,000 watts. Featuring an easy front fill reservoir, auto-tuning PID temperature controller and a liquid filled pressure gauge.

Benchtop

Benchtop Chillers from BV Thermal Systems are whisper quiet, economical and environmentally friendly. These reliable benchtop chillers are well suited to laboratories where space saving is required and reliability is expected.



Designed for use with rotary evaporators, vacuum systems, spectrometers, medical laboratories, lasers and university laboratories along with other analytical instrumentation. The simple set-up, day to day operation and low maintenance ensure that our benchtop chillers are lab-efficient and user-friendly.

